

Stainless Steel Control Panel with Alfa Laval Components and Tetra Pak Liquid Density Transducer

Mfg:

Model:

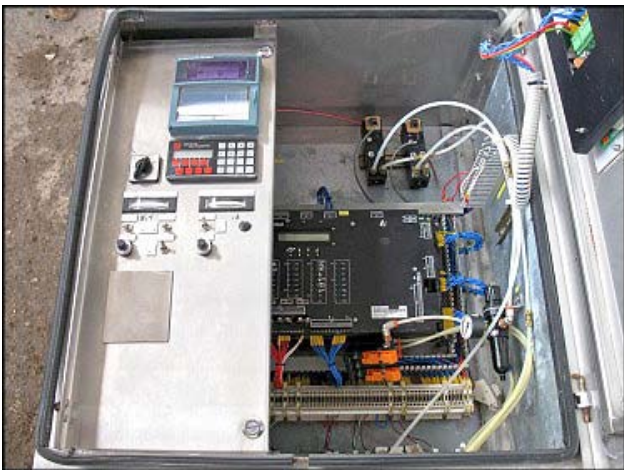
Stock No: TACJ0452A

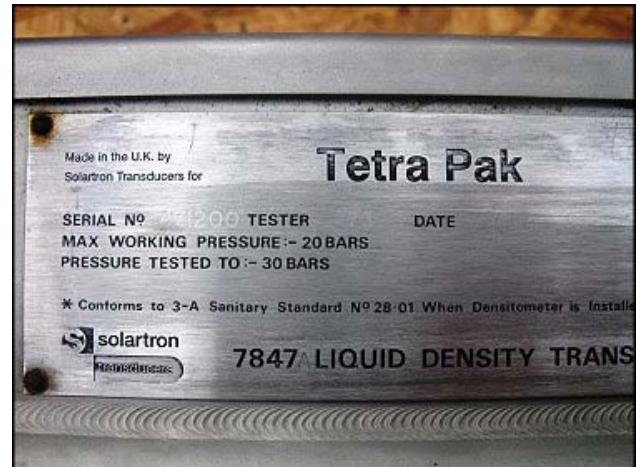
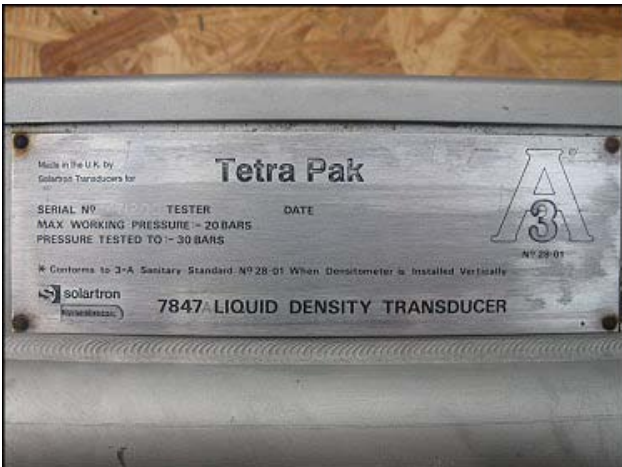
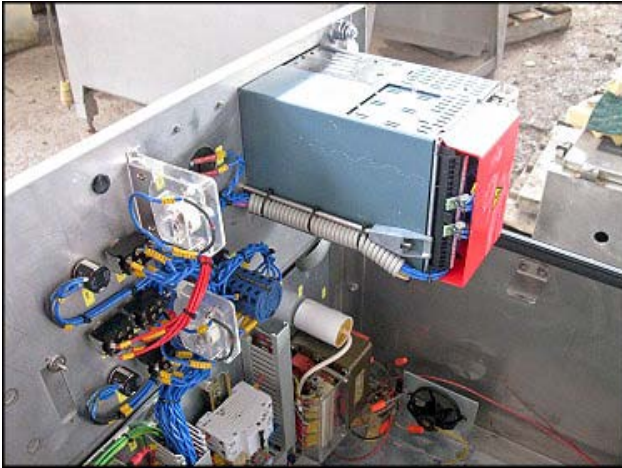
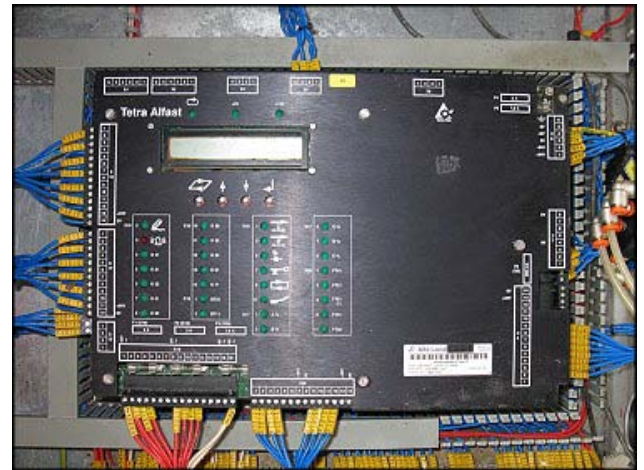
Serial No:

Stainless Steel Control Panel with Alfa Laval Components and Tetra Pak Liquid Density Transducer. Tetra Pak liquid density transducer. Model: 7847, S/N: 471200. MAWP: -20 bar. (3) 1-1/2 in. S-line ports. (1) 1-1/2 in. S-line port with a 7/8 in. inner dia. Overall Transducer dimensions: 8 ft. 4 in. L x 1 ft. 5 in. W x 9 in. H. Transducer small tank dimensions: 2 ft. 9 in. L x 4 in. dia. Control panel: (1) 2 in. S-line fitting. Control panel dimensions: 6 ft. 1/2 in. L x 2 ft. 6 in. W x 1 ft. 4-1/2 in. H. Includes: (1) Eurotherm Chessell data recorder, (1) Alfa Laval display/control, Alfafast operator module S/N: 002385. Part no: 3183051141. and (1) Alfa Laval control module. S/N: 002379. Part no: 3183051121. Case display(s): Eurotherm Chessell, Tetra and Alfa Laval Alfafast control: and operator module.









Alfa Laval [REDACTED] **MADE IN SWEDEN**

000904002379 KF

TYPE ALFAST Control-mod

PART NO 3183051121 VERSION 2

SERIAL NO 002379 TA

Alfa Laval [REDACTED] **MADE IN SWEDEN**

000927902385 KL

TYPE ALFAST Operator mod

PART NO 3183051141 VERSION

SERIAL NO 002385 TA

PASSED
8238