

HOBART701 S Ridge Avenue, Troy, OH 45374
1-888-4HOBART • www.hobartcorp.com**UW50
UTENSIL/PAN WASHER****HOBART****STANDARD FEATURES**

- 16 gauge stainless steel construction
- Solid state heat controls
- Front loading, split-door configuration
- Flat-bottomed, stainless steel frame rack, with one flat grid rack and two tray support racks
- Chamber accepts 16 full-sized sheet pans, or 140-quart mixing bowl
- Two upper and two lower revolving, debossed non-clogging wash arms
- Two upper and lower revolving rinse arms
- Heavy-duty door and door hinges
- Large, removable stainless steel scrap screen and scrap bucket
- Choice of 10 KW electric, steam injector or steam coil gas tank heat
- Adjustable wash cycle timer
- Stainless steel front panel
- Integrated detergent connections
- Top-mounted dial thermometers
- Door actuated drain closer
- Heavy-duty 5 H.P. motor
- Door interlock switch
- Corrosion-resistant impeller
- Timed fill
- Positive low water protection
- Pre-rinse spray hose (electric booster heater models only)

VOLTAGE

- 208/60/3
- 240/60/3
- 480/60/3

**MODEL**

- UW50

OPTIONS AT EXTRA COST

- 10 KW electric tank heat
- Natural or LP gas tank heat
- 14 KW electric booster heater
- Vent fan control
- Steam injector or steam coil tank heat

ACCESSORIES

- Drain water tempering kit
- Rack insert for 30" trays
- Pre-rinse spray hose assembly (field installed or gas booster machines only)
- Operator training video
- 20" x 20" peg or combination racks

Specifications, Details and Dimensions on Inside and Back.

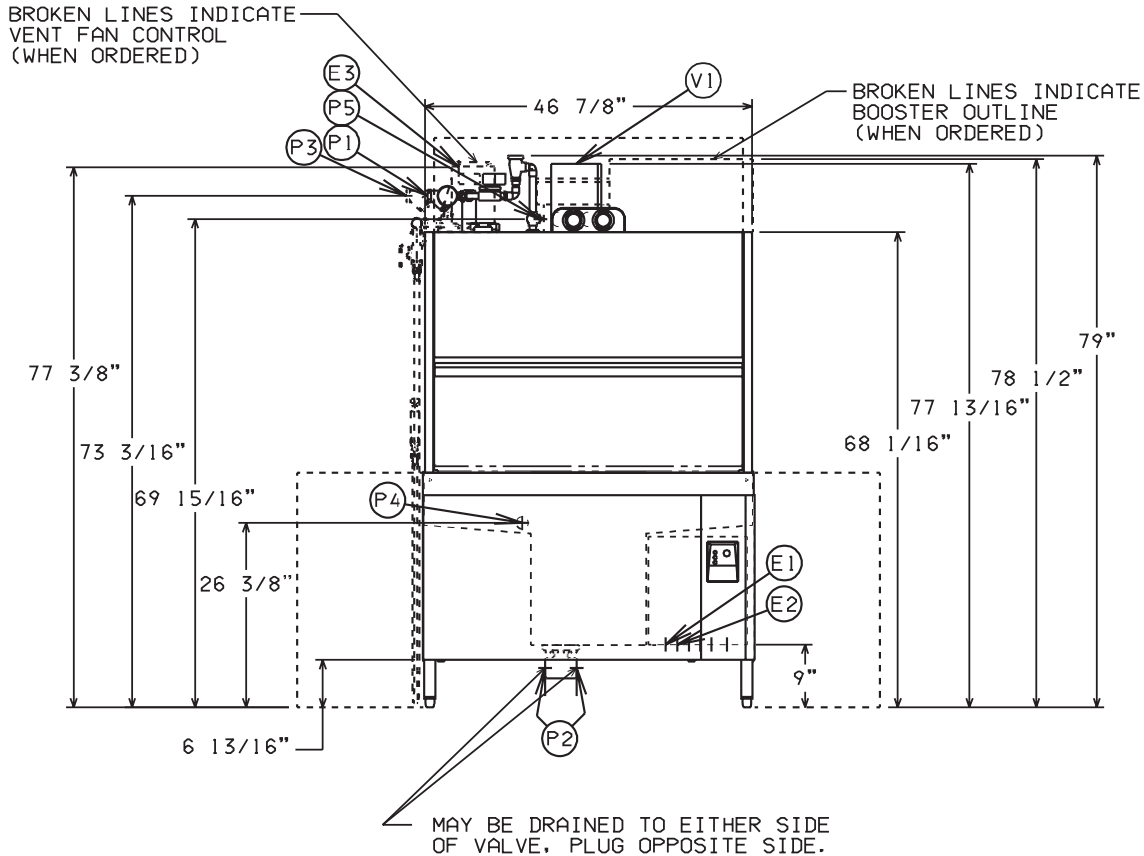
**UW50 UTENSIL/PAN WASHER**

UW50 UTENSIL/PAN WASHER



701 S Ridge Avenue, Troy, OH 45374
1-888-4HOBART • www.hobartcorp.com

DETAILS & DIMENSIONS – ELECTRIC



PLUMBING NOTES:

WATER HAMMER ARRESTOR (MEETING ASSE-1010 STANDARD OR EQUIVALENT) TO BE SUPPLIED (BY OTHERS) IN COMMON WATER SUPPLY LINE AT SERVICE CONNECTION.
RECOMMENDED WATER HARDNESS TO BE 4-6 GRAINS FOR BEST RESULTS.
RECOMMENDED BUILDING FLOWING WATER PRESSURE TO THE DISHWASHER IS 20-25 PSI. IF PRESSURES HIGHER THAN 25 PSI ARE PRESENT, A PRESSURE REGULATING VALVE MUST BE SUPPLIED (BY OTHERS) IN THE WATER LINE TO THE DISHWASHER.
PRESSURE REGULATOR FURNISHED WHEN ELECTRIC BOOSTER IS ORDERED.
FOR CONVENIENCE WHEN CLEANING, WATER TAP SHOULD BE INSTALLED NEAR MACHINE WITH HEAVY DUTY HOSE AND SQUEEZE VALVE.

MISCELLANEOUS NOTES:

ALL DIMENSIONS TAKEN FROM FLOOR LINE MAY BE INCREASED BY UP TO 1-1/8" WITH LEG ADJUSTMENT.
NET WEIGHT OF MACHINE: 640 LBS. W/O BOOSTER
DOMESTIC SHIPPING WEIGHT: 782 LBS. W/O BOOSTER
NET WEIGHT OF MACHINE: 704 LBS. W/ BOOSTER
DOMESTIC SHIPPING WEIGHT: 846 LBS. W/ BOOSTER
SHIPPING DIMENSIONS:
60" X 38" X 83" HIGH.
SIZE OF RACKS:
40-7/8" X 22-7/8" X 4-1/8"
DRAIN LEVER LOCATED INSIDE TANK.

CONNECTION INFORMATION (*AFF - ABOVE FINISHED FLOOR)

LEGEND

- E1 ELECTRICAL CONNECTION (INCLUDING ELECTRIC HEAT) 1-1/4" CONDUIT HOLE, 9" AFF.
- E2 ELECTRICAL CONNECTION-DETERGENT/RINSE AGENT FEEDERS: 1/2" CONDUIT HOLE; 9" AFF
- E3 ELECTRICAL CONNECTION-VENT FAN CONTROL (WHEN ORDERED); 3/4" CONDUIT HOLE; 77-3/8" AFF
- P1 COMMON WATER CONNECTION: 180°F WATER MIN. 3/4" FPT, 73-3/16" AFF.
- P2 DRAIN: 2" FPT, 5-5/8" AFF TWO CONNECTIONS.
- P3 COMMON WATER CONNECTION WITH BOOSTER (WHEN ORDERED); 140°F MIN.; 3/4" FPT, 73-3/16" AFF.
- P4 DETERGENT PROBE SENSOR: REMOVE CAP AND STUD ASSEMBLY TO ACCESS 7/8" HOLE, 26-3/8" AFF
- P5 RINSE AGENT FEEDER: 1/8" NPT. REMOVE 1/8" NPT PIPE PLUG TO ACCESS TAPPED HOLE; 69-15/16" AFF.
- V1 VENT EXIT: 7" X 11" X 10" HIGH TO ALLOW FOR EXPANSION OF AIR. (NEED NOT BE CONNECTED TO EXTERNAL VENT); IF REQUIRED, VENT HOOD TO PROVIDE 400 CFM EXHAUST.

SINGLE POINT ELECTRIC CONNECTION UW-50 WITH 10KW ELECTRIC HEAT (CONTROLS AND SHP PUMP MOTOR)			
ELEC. SPECS.	RATED AMPS	MINIMUM SUPPLY CIRCUIT CONDUCTOR AMPACITY	MAXIMUM OVERCURRENT PROTECTIVE DEVICE
208/60/3	50.3	70	70
240/60/3	46.2	60	60
480/60/3	23.5	30	30

SINGLE POINT ELECTRIC CONNECTION UW-50 WITH 10KW ELECTRIC HEAT AND 14KW ELECTRIC BOOSTER (CONTROLS AND SHP PUMP MOTOR)			
ELEC. SPECS.	RATED AMPS	MINIMUM SUPPLY CIRCUIT CONDUCTOR AMPACITY	MAXIMUM OVERCURRENT PROTECTIVE DEVICE
208/60/3	89.2	100	100
240/60/3	79.9	100	100
480/60/3	40.4	50	50

⚠ FOR SUPPLY CONNECTION USE WIRES SUITABLE FOR AT LEAST 90°C OR EQUIVALENT.



701 S Ridge Avenue, Troy, OH 45374
1-888-4HOBART • www.hobartcorp.com

UW50 UTENSIL/PAN WASHER

DETAILS & DIMENSIONS – ELECTRIC

